



FUNDAMENTAL
ELEVATOR SOLUTIONS

DESIGN GUIDE

RELEASE DATE 3/31/2025

© FUNDAMENTAL ELEVATOR SOLUTIONS

MACHINE ROOM-LESS **BUILDING SUPPORTED**

CAPACITY (LBS)	CAB LAYOUT	OPENINGS TYPE	DOOR WIDTH	WIDTH (A)	DEPTH (B)	WIDTH (C)	DEPTH (D)	WIDTH (E)	DEPTH (F)	IBC Gurney	CWT LOCATION
				car clear inside (min)		platform size (min)		shaft size (min)			
2100	STANDARD	F	3'-0"	5'-8"	4'-3"	6'-0"	5'-1"	8'-0"	6'-6"	NO	SIDE
2100	STANDARD	F/R	3'-0"	5'-8"	4'-4"	6'-0"	5'-8"	8'-0"	6'-9"	NO	SIDE
2500	STANDARD	F	3'-6"	6'-8"	4'-3"	7'-0"	5'-1"	9'-0"	6'-6"	NO	SIDE
2500	STANDARD	F/R	3'-6"	6'-8"	4'-4"	7'-0"	5'-8"	9'-0"	6'-9"	NO	SIDE
3000	STANDARD	F	3'-6"	6'-8"	4'-8"	7'-0"	5'-6"	9'-0"	6'-3"	NO	SIDE
3000	STANDARD	F/R	3'-6"	6'-8"	4'-8"	7'-0"	5'-11"	9'-0"	6'-11"	NO	SIDE
3500	STANDARD	F	3'-6"	6'-8"	5'-5"	7'-0"	6'-3"	8'-8"	7'-0"	YES	SIDE
3500	STANDARD	F/R	3'-6"	6'-8"	5'-5"	7'-0"	6'-8"	9'-0"	7'-8"	YES	SIDE
3500	HOSPITAL	F	3'-6"	5'-0"	7'-4"	5'-4"	8'-4"	7'-2"	9'-3"	YES	SIDE
3500	HOSPITAL	F/R	3'-6"	5'-0"	7'-4"	5'-4"	9'-0"	7'-2"	10'-4"	YES	SIDE
4000	STANDARD	F	4'-0"	7'-8"	5'-5"	8'-0"	6'-3"	10'-0"	7'-0"	YES	SIDE
4000	STANDARD	F/R	4'-0"	7'-8"	5'-5"	8'-0"	6'-9"	10'-0"	7'-10"	YES	SIDE
4000	HOSPITAL	F	4'-0"	5'-8"	7'-5"	6'-0"	8'-5"	8'-0"	9'-3"	YES	SIDE
4000	HOSPITAL	F/R	4'-0"	5'-8"	7'-5"	6'-0"	9'-6"	8'-0"	10'-4"	YES	SIDE
4500	HOSPITAL	F	4'-0"	5'-8"	7'-9"	6'-0"	8'-9"	8'-0"	9'-7"	YES	SIDE
4500	HOSPITAL	F/R	4'-0"	5'-8"	7'-10"	6'-0"	9'-6"	8'-0"	10'-9"	YES	SIDE
5000	HOSPITAL	F	4'-0"	5'-8"	8'-8"	6'-0"	9'-8"	8'-0"	10'-6"	YES	SIDE
5000	HOSPITAL	F/R	4'-0"	5'-8"	8'-8"	6'-0"	10'-4"	8'-0"	11'-8"	YES	SIDE

PIT AND OVERHEAD MINIMUM REQUIREMENTS FOR CARS WITH 8'-0" CAB HEIGHT		
SPEED	MINIMUM PIT DEPTH	MINIMUM OVERHEAD
200 fpm	5'-0"	16'-6"
350 fpm	5'-6"	17'-0"
400 fpm	6'-0"	17'-6"
500 fpm	6'-6"	18'-6"

NOTE:

- Rail Supported MRL designs are available.
- Note: For cars with tall cabs add 1" to O.H. for every inch of cab height added.
- Other hoistway sizes can be accommodated. Contact FES team for further information.

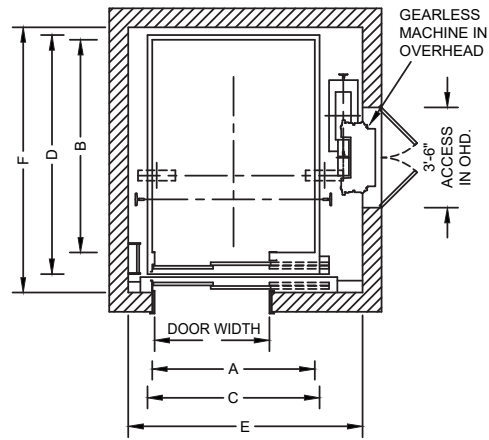
OVERHEAD TRACTION **GEARED & GEARLESS**

CAPACITY (LBS)	CAB LAYOUT	OPENINGS TYPE	DOOR WIDTH	WIDTH (A)	DEPTH (B)	WIDTH (C)	DEPTH (D)	WIDTH (E)	DEPTH (F)	IBC Gurney	CWT LOCATION
				car clear inside (min)	platform size (min)	shaft size (min)					
2100	STANDARD	F	3'-0"	5'-8"	4'-3"	6'-0"	5'-1"	7'-8"	6'-10"	NO	REAR
2100	STANDARD	F	3'-0"	5'-8"	4'-3"	6'-0"	5'-1"	8'-2"	6'-0"	NO	SIDE
2500	STANDARD	F	3'-6"	6'-8"	4'-3"	7'-0"	5'-1"	8'-8"	6'-10"	NO	REAR
2500	STANDARD	F	3'-6"	6'-8"	4'-3"	7'-0"	5'-1"	9'-2"	6'-0"	NO	SIDE
3000	STANDARD	F	3'-6"	6'-8"	4'-8"	7'-0"	5'-6"	8'-8"	7'-2"	NO	REAR
3000	STANDARD	F	3'-6"	6'-8"	4'-8"	7'-0"	5'-6"	9'-2"	6'-3"	NO	SIDE
3500	STANDARD	F	3'-6"	6'-8"	5'-5"	7'-0"	6'-3"	8'-8"	7'-10"	YES	REAR
3500	STANDARD	F	3'-6"	6'-8"	5'-5"	7'-0"	6'-3"	9'-2"	7'-0"	YES	SIDE
3500	STANDARD	F/R	3'-6"	6'-8"	5'-5"	7'-0"	6'-8"	10'-0"	7'-10"	YES	SIDE
3500	HOSPITAL	F	3'-6"	5'-0"	7'-4"	5'-4"	8'-4"	7'-6"	9'-3"	YES	SIDE
3500	HOSPITAL	F/R	3'-6"	5'-0"	7'-4"	5'-4"	9'-0"	7'-6"	10'-5"	YES	SIDE
4000	STANDARD	F	4'-0"	7'-8"	5'-5"	8'-0"	6'-3"	9'-8"	7'-10"	YES	REAR
4000	STANDARD	F	4'-0"	7'-8"	5'-5"	8'-0"	6'-3"	10'-0"	7'-0"	YES	SIDE
4000	STANDARD	F/R	4'-0"	7'-8"	5'-5"	8'-0"	6'-9"	11'-0"	7'-10"	YES	SIDE
4000	HOSPITAL	F	4'-0"	5'-8"	7'-5"	6'-0"	8'-5"	8'-2"	9'-3"	YES	SIDE
4000	HOSPITAL	F/R	4'-0"	5'-8"	7'-5"	6'-0"	9'-2"	8'-2"	10'-5"	YES	SIDE
4500	HOSPITAL	F	4'-0"	5'-8"	7'-9"	6'-0"	8'-9"	8'-2"	10'-0"	YES	SIDE
4500	HOSPITAL	F/R	4'-0"	5'-8"	7'-10"	6'-0"	9'-6"	8'-2"	11'-3"	YES	SIDE
5000	HOSPITAL	F	4'-0"	5'-8"	8'-8"	6'-0"	9'-8"	8'-2"	10'-6"	YES	SIDE
5000	HOSPITAL	F/R	4'-0"	5'-8"	8'-8"	6'-0"	10'-4"	8'-2"	11'-8"	YES	SIDE

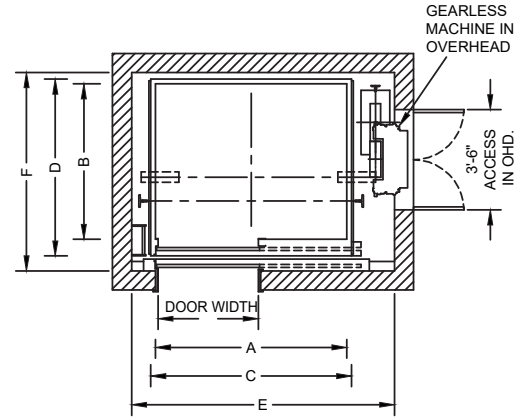
PIT AND OVERHEAD MINIMUM REQUIREMENTS FOR CARS WITH 8'-0" CAB HEIGHT	SPEED	MINIMUM PIT DEPTH	MINIMUM OVERHEAD
	200 fpm	5'-0"	15'-6"
	350 fpm	5'-6"	16'-0"
	400 fpm	6'-0"	16'-6"
	500 fpm	6'-6"	17'-0"

NOTE:

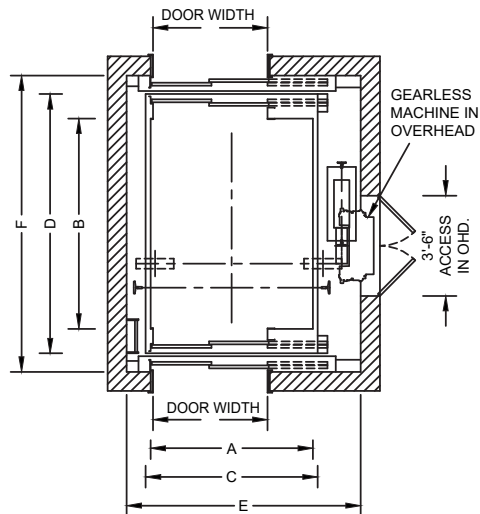
- For cars with tall cabs add 1" to O.H. for every inch of cab height added.
- Other hoistway sizes can be accommodated. Contact FES team for further information.



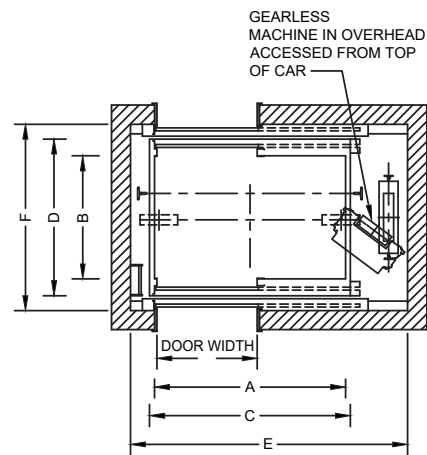
**HOSPITAL - SIMPLEX
FRONT OPENING**



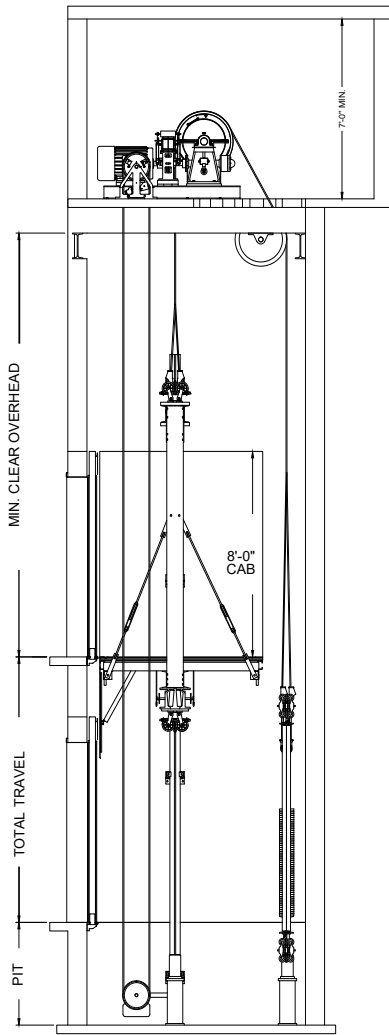
**PASSENGER - SIMPLEX
FRONT OPENING**



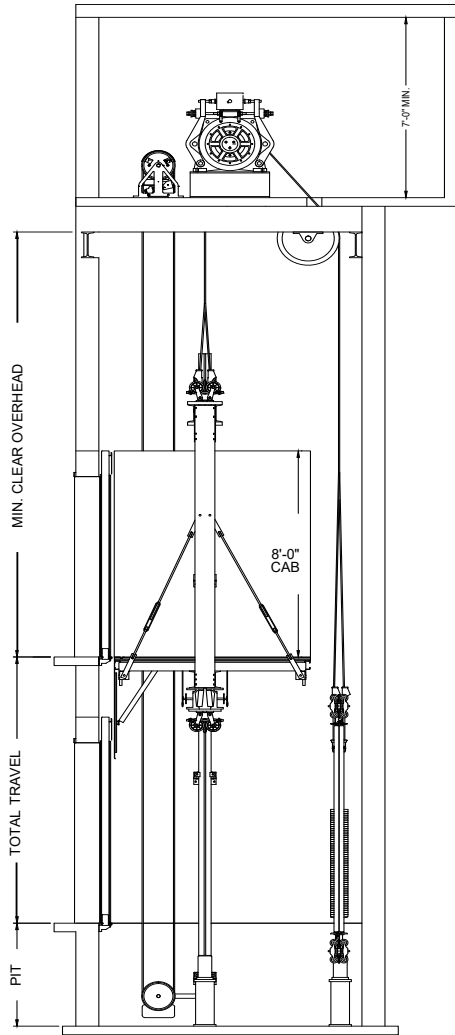
**HOSPITAL - SIMPLEX
FRONT & REAR OPENING**



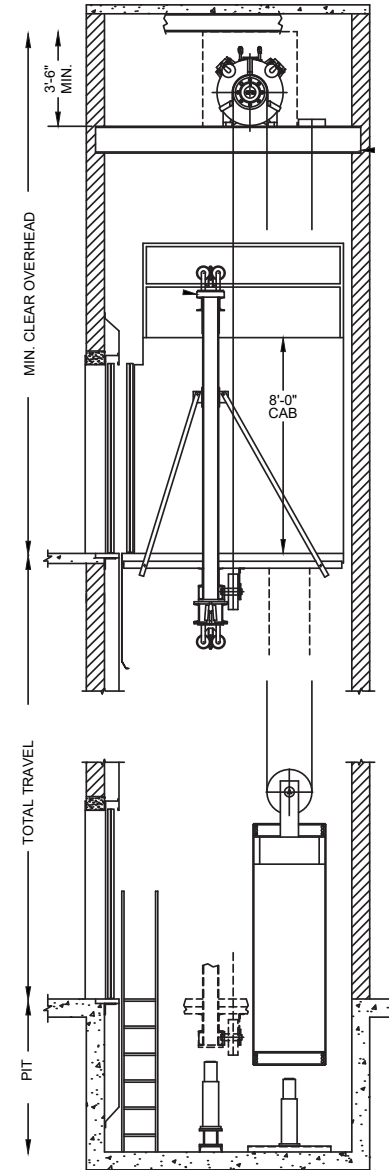
**PASSENGER - SIMPLEX
FRONT & REAR OPENING**



**HOISTWAY SECTION
OVERHEAD GEARED**



**HOISTWAY SECTION
OVERHEAD GEARLESS**



**HOISTWAY SECTION
MRL 2:1 UNDERSLUNG**